

5.

1. IP

• IP

下午2:12

74%



IP摄像头

Pavel Khlebovich

含廣告內容

解除安裝

開啟

為這個應用程式評分

分享你的心得



撰寫評論

開發人員聯絡資訊



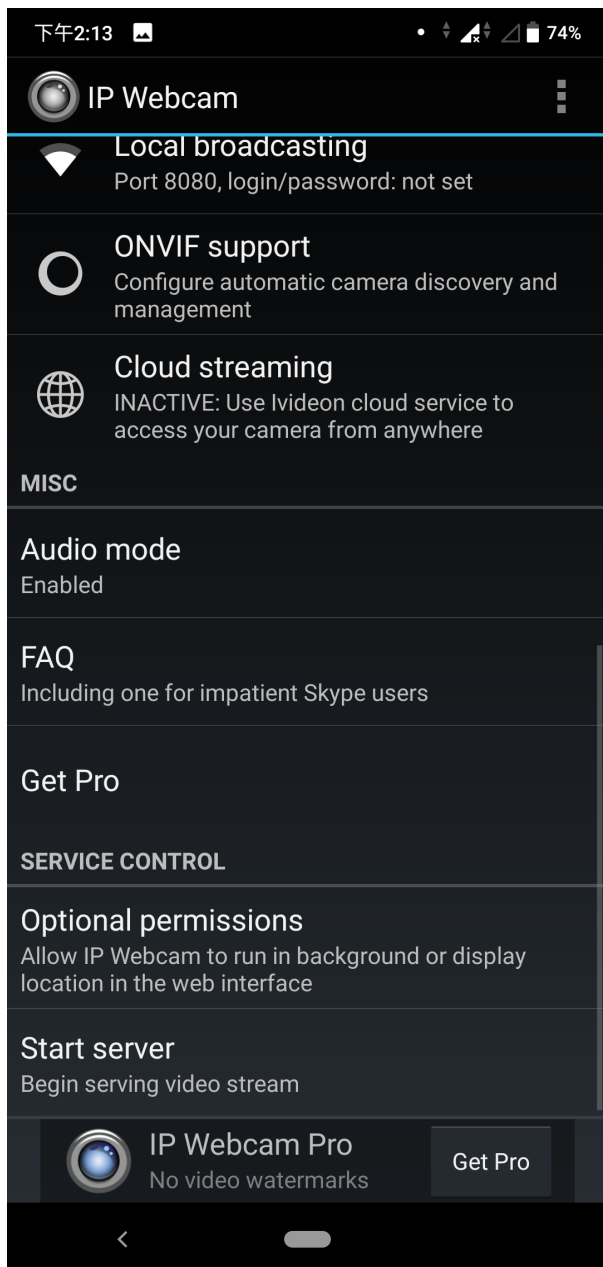
加入測試版計劃

搶先試用尚未正式發布的新功能，並向開發人員提供意見。系統會收集你使用應用程式時產生的特定資料，並提供給開發人員，協助他們改進應用程式。

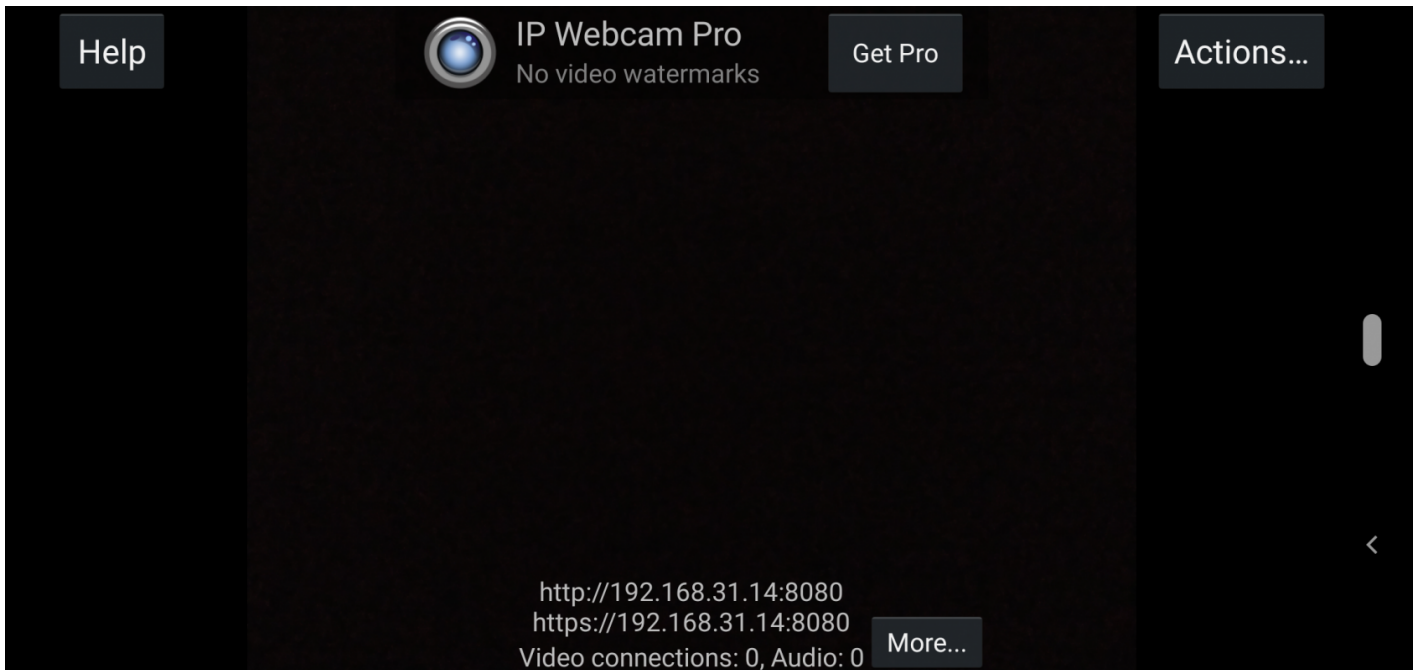


2. IP

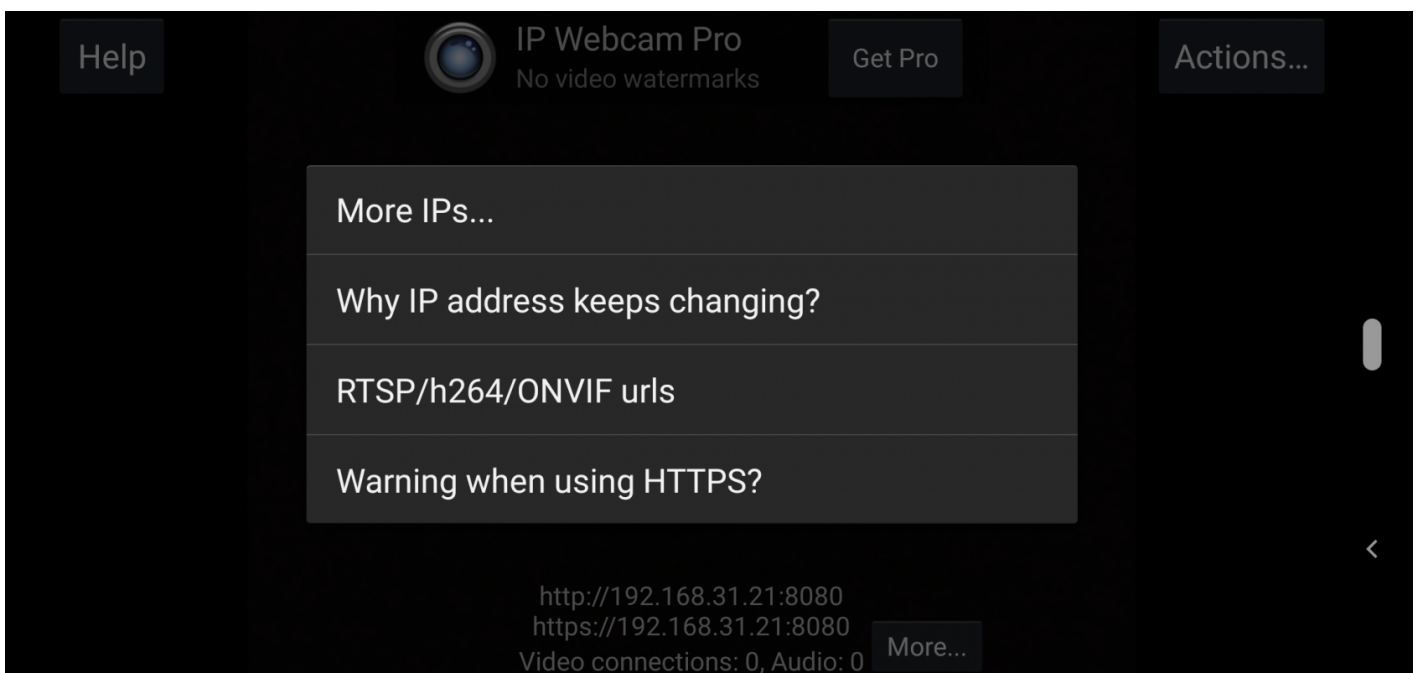
- APP Start server



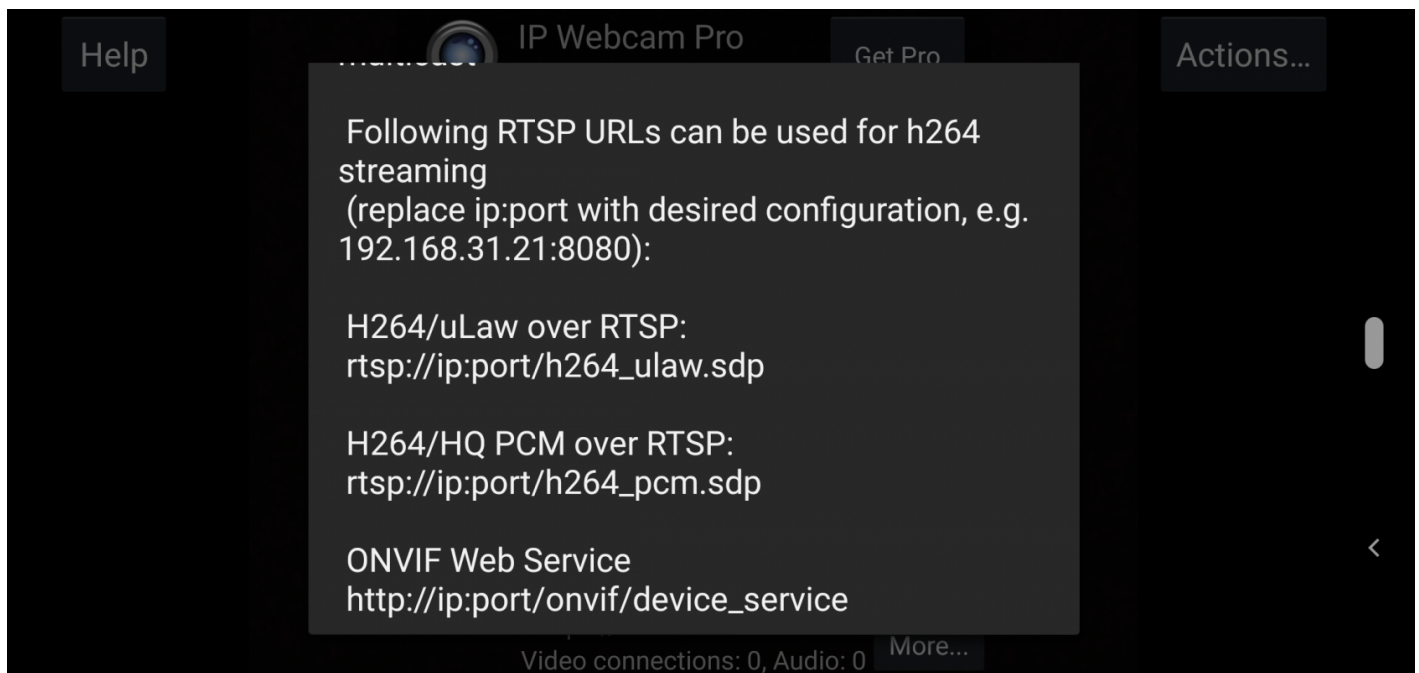
- More...



- 3 "RTSP/h564/ONVIF urls"



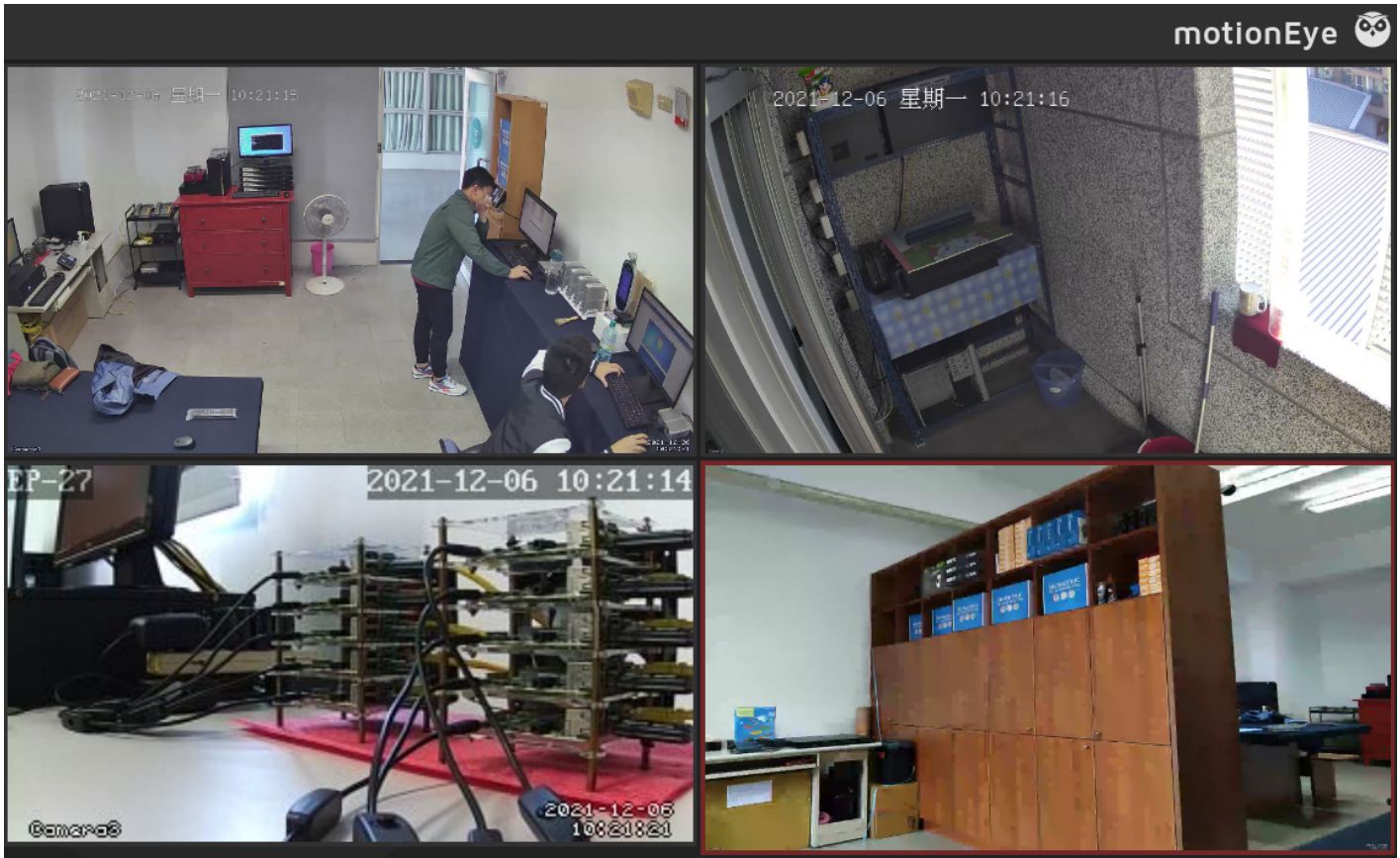
- **ip:port**/h264.sdp IP Port
- IP:Port 192.168.31.21:8080



- 192.168.31.110:8765 → → add camera
- Camera Type Network Camera
- URL rtsp://ip:port/h264_ulaw.sdp
- Camera OK

A screenshot of the 'Add Camera...' dialog box in the IP Webcam Pro application. The dialog has a title bar with a close button (X). It contains several input fields: 'Camera Type' (a dropdown menu showing 'Network Camera'), 'URL' (a text field containing 'rtsp://192.168.31.21:8080/h264_ula'), 'Username' (a text field with placeholder 'username...'), 'Password' (a text field with placeholder 'password...'), and 'Camera' (a dropdown menu showing 'IP Webcam Server 0.4RTSP/TCP C'). There is a question mark icon next to the Username and Password fields. At the bottom, there are two buttons: 'Cancel' and 'OK'. Below the input fields, there is a paragraph of text: 'Network cameras (or IP cameras) are devices that natively stream RTSP/RTMP or MJPEG videos or plain JPEG images. Consult your device's manual to find out the correct RTSP, RTMP, MJPEG or JPEG URL.'

-



Revision #15

Created 22 November 2021 03:38:19 by Epower

Updated 7 December 2021 03:04:42 by Epower