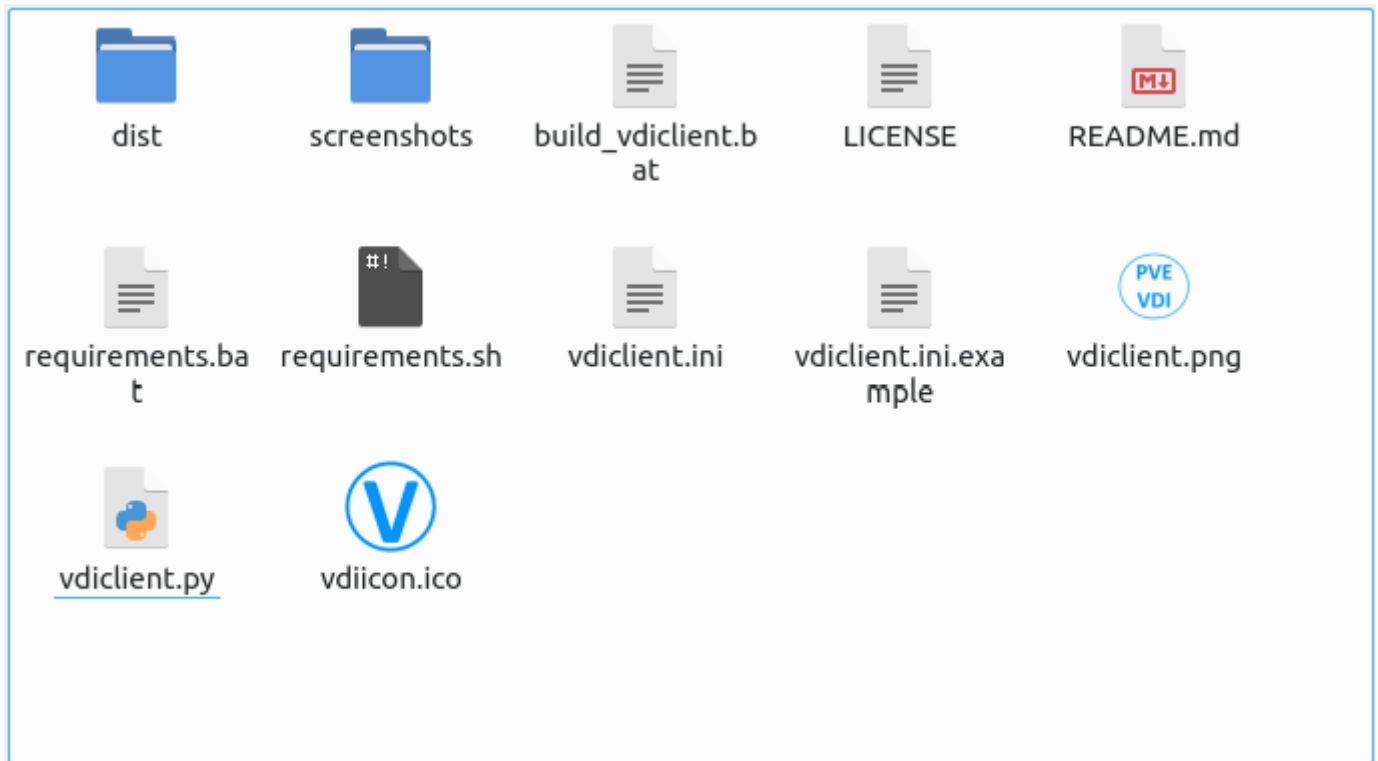


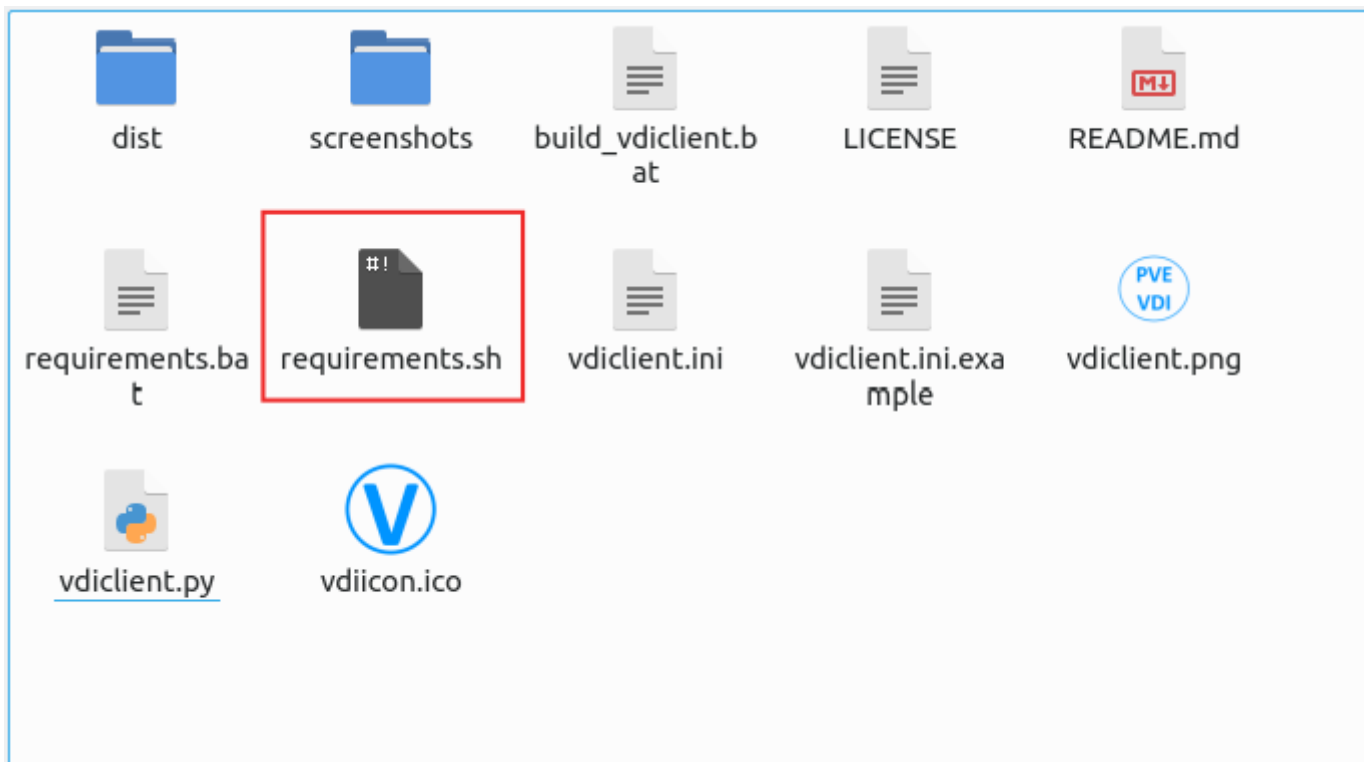
1. (Linux)

PVE VDIclient

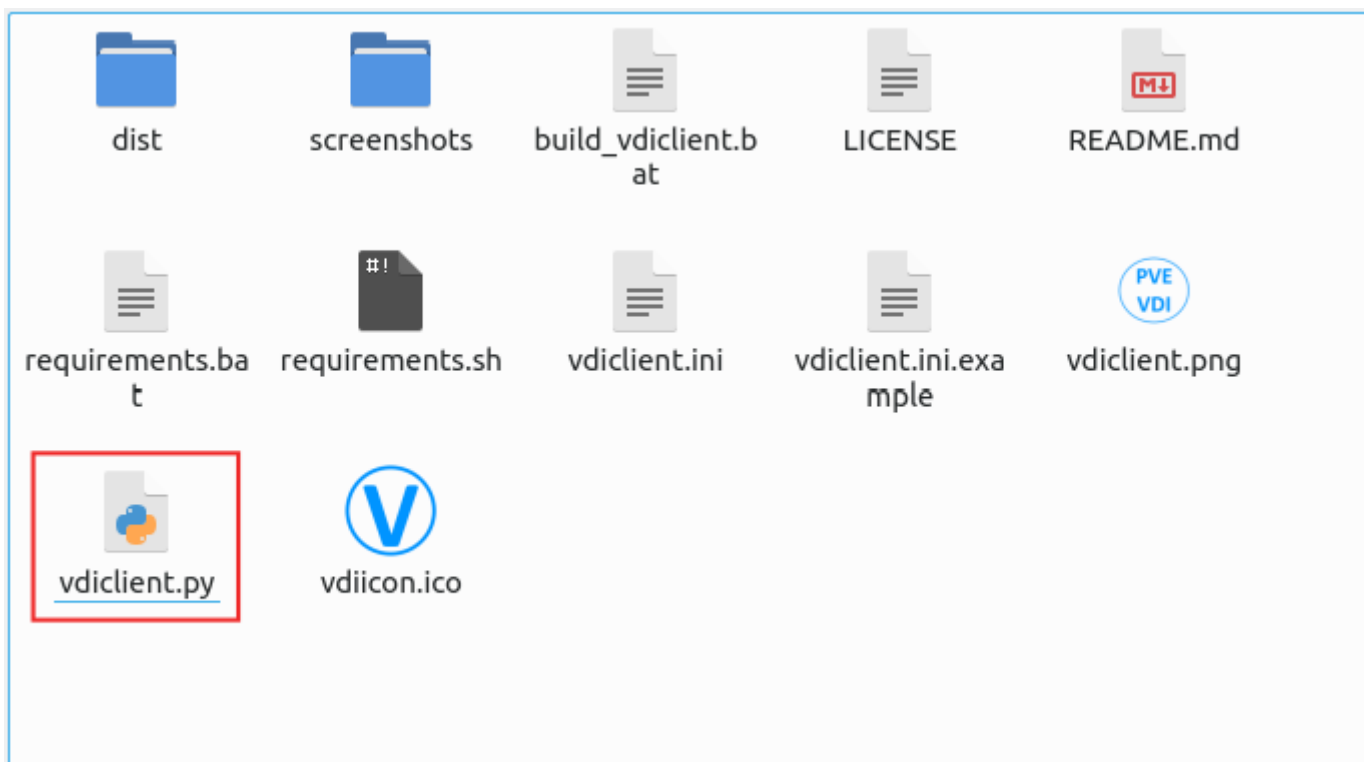


```
apt install python3-pip virt-viewer
chmod +x requirements.sh
./requirements.sh
cp vdiclient.py /usr/local/bin
chmod +x /usr/local/bin/vdiclient.py
```

requirement.sh



vdiclient.py



Username Password
root

V

VDI Login

—

×

PVE

VDI

VDI Login

Username

u1

Password

●●●●●

Log In

Cancel

connect

V

VDI Login

—

×

PVE

VDI

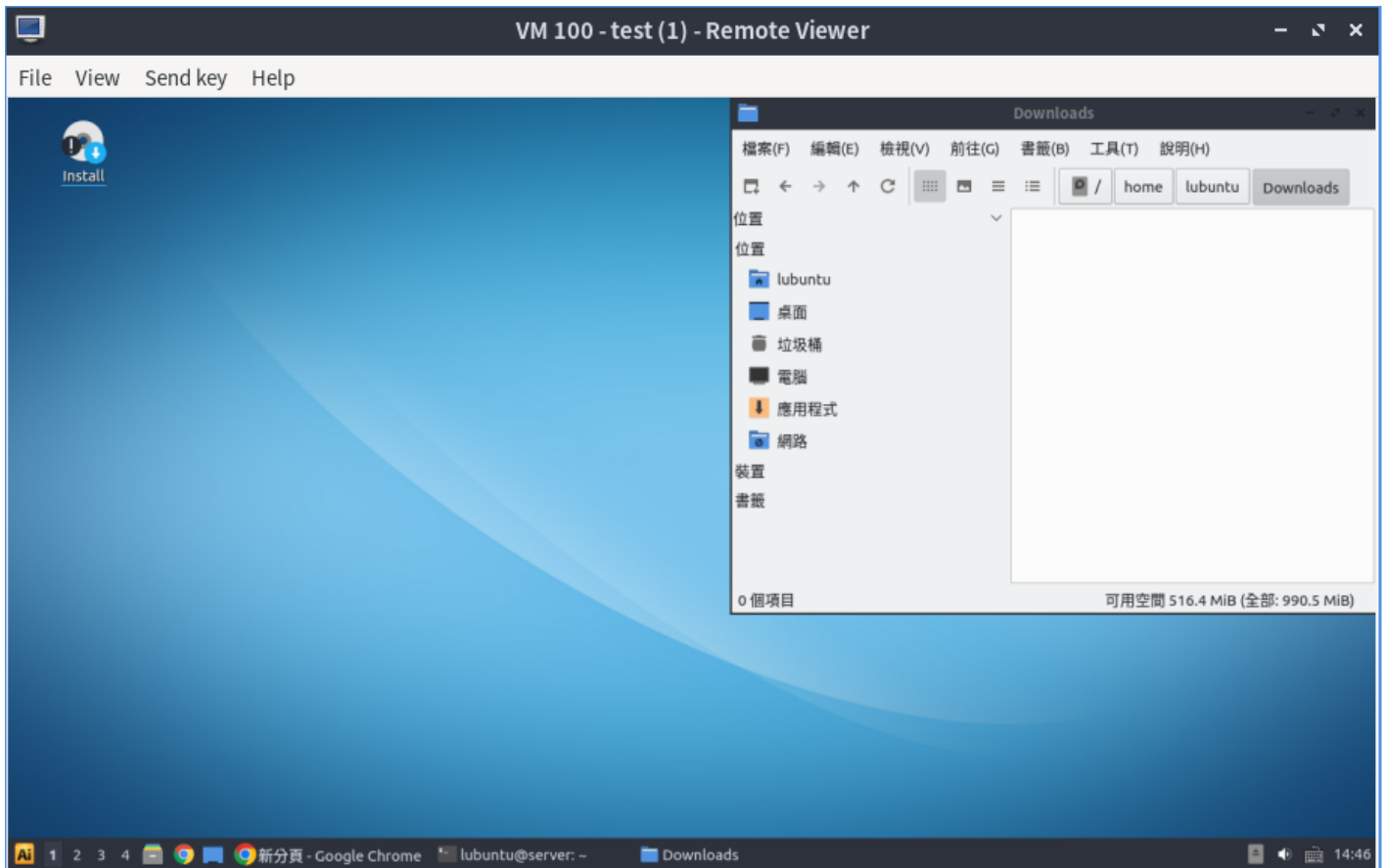
VDI Login

Please select a desktop instance to connect to

test

Connect

Logout



Revision #14

Created 15 November 2022 08:06:47 by Epower

Updated 10 January 2023 07:33:56 by Epower