

EPower VDI Pro

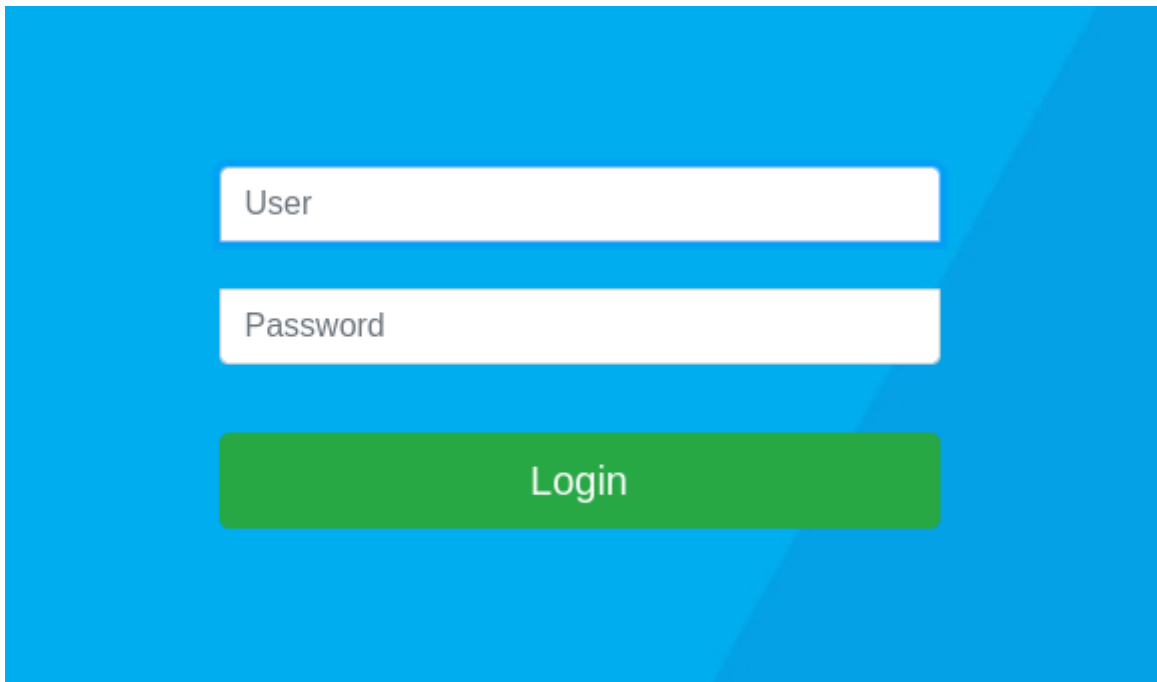
EPower VDI Pro

- 1. EPower VDI
- 2.
- 3.
- 4.
- 5.
- 6. Base
- 7.

1. EPower VDI

1. EPower VDI

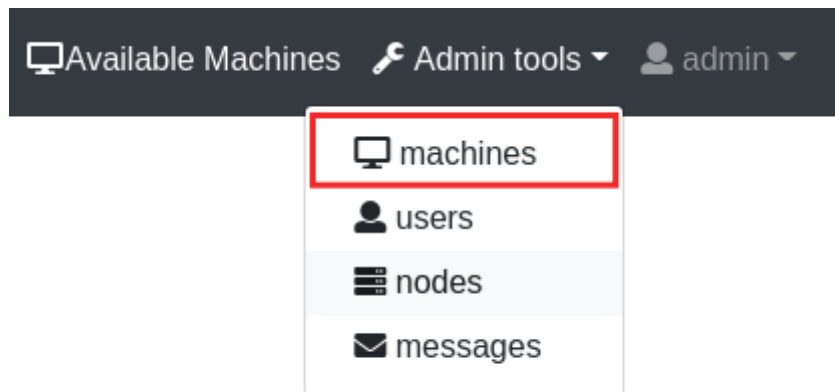
- demo.sopdom.com:8081 User Password

A login form with a blue background. It contains two white input fields, one labeled 'User' and one labeled 'Password', stacked vertically. Below these fields is a green button labeled 'Login'.

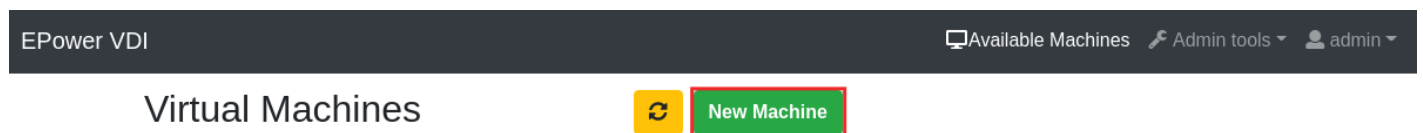
2.

1.

- Admin tools→machines



- New Machine



- New Machine
 - Windows 10
 - ※ System Disk
- Create
- ISO ※

New Machine

From Template

From Machine

Backend ⓘ

KVM

Select Template ⓘ

Windows 10

Windows 10 64 bits. Requires an user provided ISO image.[\[help\]](#)

Select ISO ⓘ

/storage/vm/Win10_1909_Chinese_Traditional_x64.iso

Name

VDI-WIN10S

Ram: (GB)

8

System Disk: (GB)

30

The Minimum Disk Size needed for this ISO is 21GB.

Swap

Disable

Content will be cleaned on restore and shutdown

Data

Disable

Content will be kept on restore

Cancel

Create

3.

1.

- Start View

Virtual Machines



New Machine

Requests 1

Machine Name	Base	Public	Status	Actions	Node
VDI-WIN10S	<input type="checkbox"/>		Down	<div><div>1</div><div>2</div><div></div><div></div><div></div><div></div></div>	localhost

- View

Running

A viewer is required to run the virtual machines. [Read more.](#)

Display

spice

- The password for this virtual machine connection is :
- Display URL : <spice://59.125.82.92:5907>
- Display IP : 59.125.82.92
- Display Port : 5907

view

Press SHIFT + F12 to exit the virtual machine

Machine Information

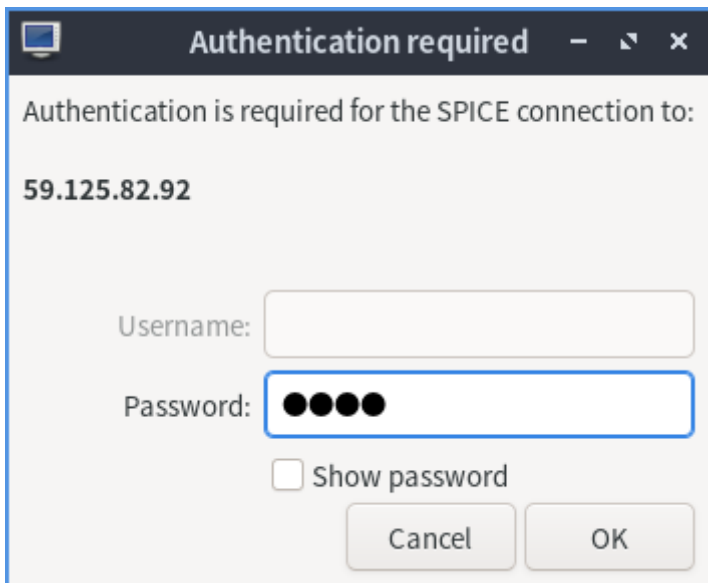
- Internal IP: waiting for network to come up
- Hardware address
- Max Memory: 8388608
- Memory: 8388608
- CPUs: 1

- .VV

42.vv



- Ctrl+V → OK



A screenshot of a Windows-style dialog box titled "Authentication required". The dialog has a dark blue header bar with a small icon on the left and standard window controls (minimize, maximize, close) on the right. The main content area is light gray and contains the text "Authentication is required for the SPICE connection to:" followed by the IP address "59.125.82.92" in bold. Below this, there are two input fields: "Username:" with an empty text box, and "Password:" with a text box containing four black dots. A checkbox labeled "Show password" is positioned below the password field. At the bottom right, there are two buttons: "Cancel" and "OK". The entire dialog box is outlined with a blue border.

Authentication required

Authentication is required for the SPICE connection to:

59.125.82.92

Username:

Password:

☐ Show password

Cancel OK

4.

1.



•



啟用 Windows

若這是您第一次在此電腦上安裝 Windows (或您是要安裝不同的版本)，您必須輸入有效的 Windows 產品金鑰。您應該可以在購買 Windows 數位版本後收到的確認電子郵件或 Windows 包裝盒裡面的標籤上找到產品序號。

產品金鑰看起來像這樣: XXXXX-XXXXX-XXXXX-XXXXX-XXXXX

若要重新安裝 Windows，請選取 [我沒有產品金鑰]。稍後將自動啟用您的 Windows 版本。



[隱私權聲明\(P\)](#)

[我沒有產品金鑰①](#)

[下一步\(N\)](#)



Windows 安裝程式



選取您要安裝的作業系統(S)

作業系統	架構	修改日期
Windows 10 家用版	x64	2019/10/7
Windows 10 教育版	x64	2019/10/7
Windows 10 專業版	x64	2019/10/7
Windows 10 專業教育版	x64	2019/10/7
Windows 10 工作站專業版	x64	2019/10/7

描述:

Windows 10 專業版

下一步(N)



您要哪一種安裝類型？

升級: 安裝 Windows 並保留檔案、設定與應用程式(U)

使用此選項時，安裝程式會將檔案、設定與應用程式移動到 Windows。只有當電腦執行的是支援的 Windows 版本時，才能使用此選項。

自訂: 只安裝 Windows (進階)(C)


使用此選項時，安裝程式不會將檔案、設定與應用程式移動到 Windows。若要變更磁碟分割與磁碟機，請使用安裝光碟啟動電腦。建議您先備份檔案再繼續進行。



Windows 安裝程式




您要在哪裏安裝 Windows?

名稱	大小總計	可用空間	類型
 磁碟機 0 未配置的空間	30.0 GB	30.0 GB	

 重新整理(R)

 刪除(D)

 格式化(E)

 新增(E)

 載入驅動程式(L)

 延伸(X)

下一步(N)

您要如何進行設定？



設定供個人使用

將協助您使用個人 Microsoft 帳戶設定。您將可完全控制此裝置。



為組織設定

您將可存取您組織的資源，如電子郵件、網路、應用程式及服務。您的組織將可完全控制此裝置。

下一步

誰會使用這部電腦？

您要使用哪一個名稱？



名稱

或者，使用線上帳戶，效果更好

下一步

建立超好記的密碼

請務必挑選您絕對會記得的項目。



密碼

或者，使用線上帳戶，效果更好

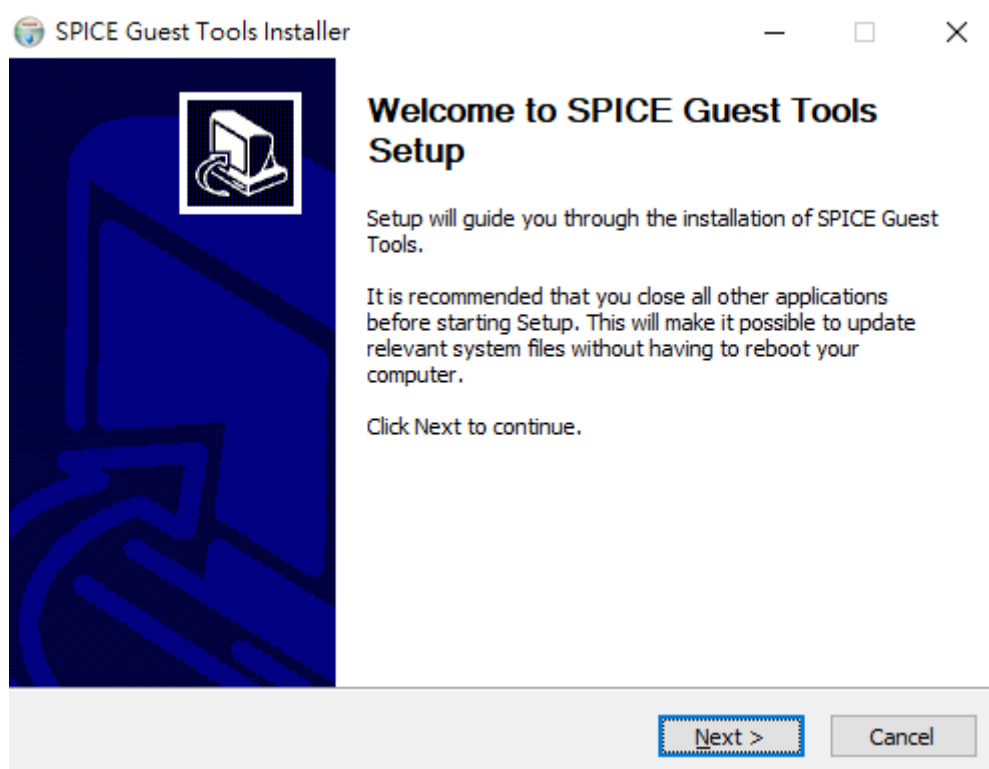
下一步

5.

1.

- Windows 10 [Windows guest tools](#)

2.



6. Base

Base Public

1. Base

Virtual Machines

New Machine

Requests 1

Machine Name	Base	Public	Status	Actions	Node
VDI-WIN10S	<input type="checkbox"/>		Down	<div><div></div><div></div><div></div><div></div></div>	localhost

- Base→Prepare Base

Virtual Machine VDI-WIN10S Settings

Actions

Description

Rename

Options

Drivers

Hardware

Screenshot

Graphics

Base

Copy

Ports

Access

Remove

Prepare Base

2

Prepare this machine as a base to create clones from it.

- YES

Virtual Machine VDI-WIN10S Settings

Actions

Description

Rename

Options

Drivers

Hardware

Screenshot

Graphics

Base

Copy

Ports

Access

Remove

Are you sure you want to prepare the base of VDI-WIN10S?

No

Yes

- Base

Virtual Machine VDI-WIN10S Settings

prepare_base VDI-

Actions

Description

Rename

Options

Drivers

Hardware

Screenshot

Graphics

Base

Copy

Ports

Access

Remove

Request prepare base VDI-WIN10S working.

Virtual Machine VDI-WIN10S Settings

prepare_base VDI-

Actions

Description

Rename

Options

Drivers

Hardware

Screenshot

Graphics

Base

Copy

Ports

Access

Remove

Pool

Remove Base

Remove the base prepared from this machine

Request prepare base VDI-WIN10S done.

2. Base Publiuc

- Public→YES

Virtual Machines

Requests 1

Machine Name	Node
VDI-WIN10S	localhost

Available Machines

Changing Public State

Are you sure you want to change the Public state of VDI-WIN10S to true?

NoYes

- Base Public

Virtual Machines

↻

New Machine

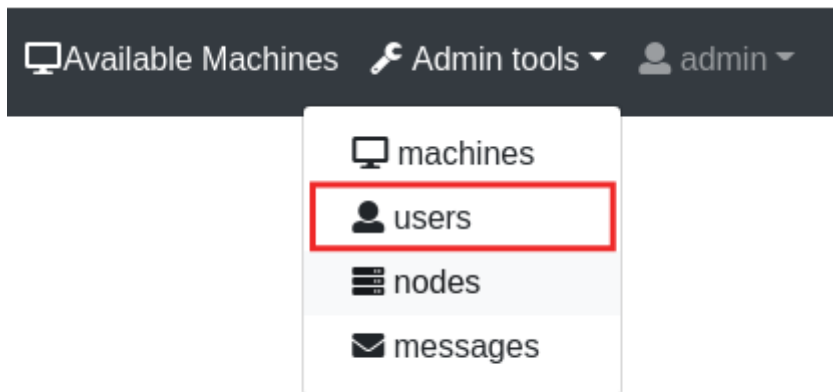
Requests 1

Machine Name	Base	Public	Status	Actions	Node
VDI-WIN10S	<input checked="" type="checkbox"/>	<input checked="" type="checkbox"/>	Down	This Machine is a base	localhost

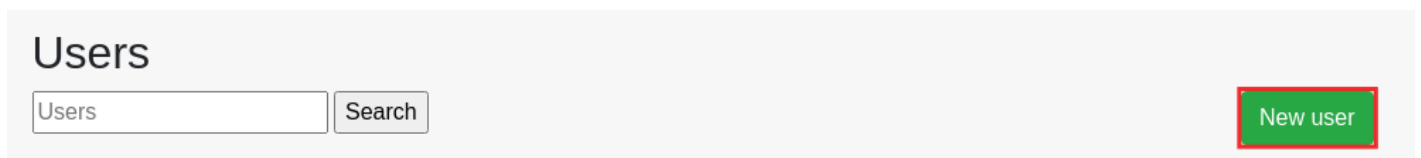
7.

1.

- users



- New user



- Submit

Create a new account

Please enter the following information to create the account.

Username

Password



Confirm Password



Congrats

The new user **epower** has been added successfully!

What do you want to do now?



Add another user

2.

-

User

Password

Login

- 3. Start

VDI-WIN10S

▶ Start

↺ Restore ⚙